

FREE

# Buckfastleigh & Buckfast

2016-17 Guide



Wildlife  
History  
Adventure





Award Winning Family Owned  
Funeral Directors for 24/7 Care

# Heart & Soul Funerals

Green Fuse Bereavement Care



Funeral Home at Riverstone, Dart Mills, Buckfastleigh

01364 643522

[heartandsoulfunerals.co.uk](http://heartandsoulfunerals.co.uk)



## Contents

Welcome .....	4	Don't Miss This! .....	24
Families & Kids .....	7	Myths & Legends .....	26
Wildlife .....	9	Adventure .....	30
Arts & Culture .....	12	Local Food .....	32
Walks Around Town .....	13	Did You Know? .....	34
Fore Street: The Heart of Town .	20	Directory .....	35
Buckfastleigh Town Map .....	22	Church Services .....	38

Whilst every effort has been made to ensure that all the information in this official guide is correct, neither SB Publishing nor Buckfastleigh Town Council accepts responsibility for any loss or inconvenience arising from any errors.

Design Copyright: SB Publishing, 17 Abbey Way,  
Willesborough, Ashford, Kent TN24 0HY  
Tel: 01233 627274

Email: [sbpublishing@outlook.com](mailto:sbpublishing@outlook.com)  
Website: [www.sbpublishing.net](http://www.sbpublishing.net)

**FAR MORE THAN  
A STEAM TRAIN RIDE**

As seen on  
BBC ONE  
And Then There  
Were None

**SOUTH DEVON RAILWAY**  
BUCKFASTLEIGH • STAVERTON • TOTNES

*Just the ticket!*

**3 GREAT ATTRACTIONS**  
1 AMAZING DAY

**GO ONLINE!**

Buckfastleigh • Staverton • Totnes  
[www.southdevonrailway.co.uk](http://www.southdevonrailway.co.uk)

# Welcome

## Treasures of our moorland town

**Welcome to Buckfastleigh, a beautiful Dartmoor town renowned for its medieval heritage, its rich and rare wildlife, one of Britain's finest steam railways and the historic abbey at Buckfast.**

Buckfastleigh welcomes visitors into the heart of town to enjoy the delights of the heated outdoor pool and café in Victoria Park, next to the main car park. This also gives fast and easy access to the local eateries, the charming Fore Street and the riverside Orchard and Millennium Green. Take a wander, browse the shops, sample a Devon cream tea or stop for a traditional pint. Grab a pasty, an organic pie, fresh sandwich or fish and chips and walk to the lower end of Fore Street to picnic and make friends with the town's extraordinary collection of exotic, brightly coloured wild ducks. Follow our town walks that take in the rich wildlife and include many of the treasures of the historic town, including the steam railway, which runs regular services to Staverton and Totnes and year-round special events for train-lovers of all ages.

With three Dartmoor rivers converging here, our natural landscape means beautiful and rare wildlife is drawn to live and move through the town. Otters descend the rivers at daybreak to reach the Dart to feed, and the rare Greater Horseshoe Bat has established a maternity roost here. They can be seen in their hundreds on some evenings at dusk if you take a stroll in Lower Town, and the locals take great pride in their protection.




*Orchard Millennium Green, Station Road*





Today Britain's only working sheepskin tannery is still very much in business here, supplying carpets to Rolls Royce. Newer industries, including many specialist food production companies, have based themselves here.

Close to the Town Hall and Library you'll find the local arts hub, Jellyfish, showing new exhibitions every month and hosting regular talks, films and activities for children and young people. Buckfast Abbey offers a fine programme of concerts and other events, and they have a year-round educational programme and tours of the garden. The information point and town museum in Fore Street, The Valiant Soldier, unveils more surprises. Once a public house, it closed in 1965 and was left untouched for decades.



# St Mary's Catholic Primary School


Buckfast Road, Buckfast,  
Devon TQ11 0EA (01364) 642389

admin@stmarysrc.devon.sch.uk    www.stmarysrc.devon.sch.uk

St. Mary's is a small, friendly school.

Our extensive building work over the past few years has dramatically transformed the school, creating improved facilities for teaching and learning and spacious areas for sport and outdoor education.

Please contact the school for more information, or to arrange a visit.



*St Mary's is a good school. It is a community whose members feel valued.'*

**OFSTED 2011**

*'As parents we could not be happier, or ask for more from the school. We are thrilled with our child's progress and very much look forward to our second child joining in the near future.'*

Parental questionnaire  
2015



*The Valiant Soldier in Fore Street is home to the Buckfastleigh Museum and town archive (upstairs, above the old pub). It is also the information point for visitors. 01364 644522*



Visitors can take in the bar, rooms upstairs and even the contents of the attic, to be reminded of post-war conditions in 'the pub where time was never called'. Drop in for details of local events, guided walks or to explore the town archive and more.

Buckfastleigh retains many relics of its prehistoric as well as its traditional industrial past. Buckfastleigh Hill, to the east of Lower Town, is a site of international geological importance for its mineral structure, the Pengelly Caves and the fossilised remains of rhinos, hippos and elephants that roamed the river terraces 100,000 years ago. Of course no town of such ancient and historic significance is without a spooky tale or two. Buckfastleigh legends and myths abound. Climb Church Hill to locate the evil squire's tomb that sparked Sir Arthur Conan Doyle's imagination to create The Hound of the Baskervilles. Dare to run round it seven times and you may have your fingers knawed by the troubled soul within. Change your mind and you'll need the Wishing Steps on your way back down into town, to lift any curse.

## J. SEARLE & SON

**ELECTRICAL APPLIANCE  
SPECIALIST**  
(Sales & Rental)



**Family run business established  
for over 40 Years for all your  
electrical needs.**

**We have large showrooms for  
everything from TVs to  
washing machines**

**43 Fore Street**

**01364 643242**

**WEBSITE: [www.jsearle.co.uk](http://www.jsearle.co.uk)**



***We deliver, we install, we care***



## Maximise your potential at TBGS Sixth Form

Academic excellence in both the  
International Baccalaureate  
and A Levels.  
We welcome IB applications  
from female students.



*Where a caring environment and excellence of teaching empower you*

- Average IB score 36 vs. World average of 29
- 79% A\*/B at A Level
- 17 Oxford/Cambridge students last year
- 79% achieved Russell Group places

Online Prospectus and Application Forms are available from -

**[www.tbgs.co.uk](http://www.tbgs.co.uk)**

For further information or to arrange a visit  
please contact [plaidbetter@tbgs.torhaysch.uk](mailto:plaidbetter@tbgs.torhaysch.uk)

**TORQUAY BOYS' GRAMMAR SCHOOL**



# Families & Kids

Plan your  
day in and  
around town



## HEAD FOR THE HEATED OUTDOOR POOL

The town's much-loved open air pool, built in 1887, is heated to a tropical 28 degrees and is a perfect place to relax, play or swim some lengths. Find it in the main green space and playground of Victoria Park, open every day in summer, with early morning and late evening swims for adults, hot and cold drinks, cakes and snacks.

**01364 642222 • [buckfastleighpool.co.uk](http://buckfastleighpool.co.uk)**



## LUNCH WITH THE DIPPERS

Millennium Green and the town orchard are at the east end of Fore Street (a few minutes from the main car park via the shops). This is a tranquil community space next to the River Mardle, with picnic benches and 'Tea on the Green' on many summer Sundays, where you can sit and watch the extraordinary collection of local water fowl – see page 13.

Maps and walks to explore  
the town – see pages 13-20.



## REACH FOR THE PEAKS

GO! CLIMB! is a great indoor bouldering experience for families or youth groups. Instructors show you how, give you a harness and get you climbing with an automatic belay system. Want more of a challenge? Have a look at indoor and outdoor climbing and caving on offer at Dart Rock.

**01364 644499 • [dartrock.co.uk](http://dartrock.co.uk).**

## WORK OFF SOME STEAM



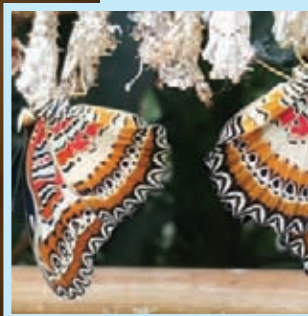
The South Devon Railway will transport you to the glorious days of steam engines, with activities all year round, regular services, a museum for youngsters, a toy train table and the nearby ride-on miniature railway. There's also Ashley, our very own small blue tank engine. Hop in the cab! Free parking at the station.

**01364 644370 • [southdevonrailway.co.uk](http://southdevonrailway.co.uk)**

## JOIN THE OTTERS FOR TEA

Feeding time at the otter sanctuary, alongside the River Dart next to the South Devon Railway, is great fun. Each day at 11.30am, 2pm and 4pm a friendly keeper leads visitors around and introduces the residents, including rescued native otters and others bred here. Exotic butterflies, terrapins and leaf-cutting ants complete this wildlife extravaganza and the ticket lasts all day, so you can explore the riverside and railway and revisit at otter tea-time!

**01364 642916 • [ottersandbutterflies.co.uk](http://ottersandbutterflies.co.uk)**



PHOTOS: JOE CARTWRIGHT

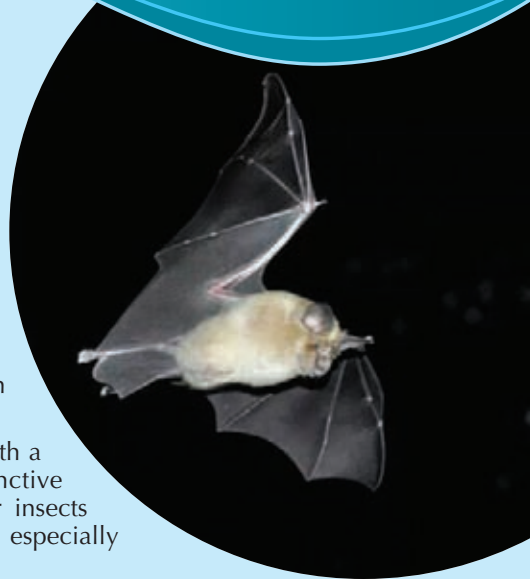


## Our rare and special neighbours

**Buckfastleigh is home to a large colony of the magnificent and very rare Greater Horseshoe Bat (GHB).**

Our natural landscape offers the right combination of roosting, hibernation and foraging sites to provide home to a significant proportion of this endangered species, including an active maternity roost, where female bats breed and rear their young. Only a few thousand of these bats remain in the UK and one-third of these are in Devon.

The GHB is one of the largest British bats, with a wingspan of up to 40cm and a distinctive horseshoe-shaped nose. They feed on larger insects such as chafers, dung beetles (juvenile bats especially



### Curious Goose Nursery Buckfastleigh

**HANDS-UP WHO WANTS  
FREE CHILDCARE?**

**Places available for eligible  
2, 3 and 4-year-olds**

*"Communication and language is a priority:  
teaching in this area is a strength, being  
consistently good and at times outstanding."*  
OFSTED May 2014

Outdoor learning area with a  
**FANTASTIC mud Kitchen**

A Strong focus on Playing and Learning  
to Socialise using the PALS programme  
Foreign languages and links with  
nurseries in other countries

Email: [thecuriousgoose@hotmail.co.uk](mailto:thecuriousgoose@hotmail.co.uk)  
Phone: 01364 642816  
Website: [www.curiousgoosenursery.co.uk](http://www.curiousgoosenursery.co.uk)  
or Find us on Facebook

### SMOKESON GLASS

**We Supply And Fit To The Trade And Public**

- CUT GLASS & MIRRORS
- TRIPLE GLAZED UNITS
- GLASS BALUSTRADING
- SHOWER SCREENS
- GLASS FLOORING & BRIDGES
- SPLASHBACKS
- DOUBLE GLAZED UNITS
- ARGON FILLED UNITS
- TABLE TOPS
- GLASS PARTITION WALLS
- SHELVES
- SANDBLASTING

Tel: 01364 644673 Fax: 01364 642162

Email: [smokesonglass@aol.com](mailto:smokesonglass@aol.com)

### WICKS FENCING

**WJ WICKS & SONS LTD**  
*Fencing Contractors*

**Erection of Fences Fencing Material Supplies**

**Bigadon Lane, Buckfastleigh, Devon TQ11 0DT**

**Phone: 01364 643237 Fax: 01364 642054**

**Mobile: 07831 345611/07771 606281**

**Email: [wicks.fencing@outlook.com](mailto:wicks.fencing@outlook.com)**

**Website: [www.wicksfencing.co.uk](http://www.wicksfencing.co.uk)**



HUGH CLARK

## GREATER HORSESHOE FACTS

- Echo-location is what bats use to find their way in the dark and locate their prey, bouncing high frequency sounds off objects as they fly.
- These bats can live to the age of 30, but the average lifespan is 10 years.

DEVON  
GREATER  
HORSESHOE  
BAT PROJECT

*Buckfastleigh is proud to be working with the Devon Wildlife Trust to secure the bats' future. Find out more from: [www.devonbatproject.org](http://www.devonbatproject.org)*

love these), moths and caddis flies – creatures that thrive in the rich biodiversity of our the surrounding ancient woodlands, hedgerows, wildlife meadows, rivers and cattle-grazed pastures. Each roost needs a feeding zone with a radius of 4km.

Bat-spotting is easy from spring to autumn. Stroll through town and along the river just after sunset and you'll be rewarded with the exhilarating sight of hundreds setting off to enjoy a night's foraging. But remember that the bats are protected by international law. Do not disturb or interfere with them in any way: no loud noises, no bright lights.

---

## A world of expertise in bees

**Buckfast Abbey became famous for beekeeping in the 1950s, when one its monks, Brother Adam, travelled the world collecting and breeding from different species. He created the Buckfast Bee, a strain resistant to disease, which was sold internationally for decades.**

Today the abbey's beekeeping operation, headed by Clare Densley, focuses on education and training, offering year-round courses to beekeepers and beginners, including the weekly £1 drop-in, open to everyone (every Sunday at 1.30pm).

"Our bees are now what we call Devon mongrels," said Clare. "We work with nature to allow a wider gene pool to develop because ultimately pure strains tend to become weak and prone to disease."

Bee numbers in the UK have fallen, mainly because of the Varroa parasite, which Clare treats using a gentle spray on the bees in her care. It is made from propolis, a resin





## BEE-O-DIVERSITY

- There are many beekeepers in this region of Devon. It is an exceptional area for honey because of our ancient hedgerows and many trees, providing great variety of pollens.
- While heavy monocultures are good for honey production, our biodiverse local environment is better for the bees themselves.



found naturally on tree buds and already used by the bees as a sealant in the hives.

For Buckfast Abbey courses and further information go to: [www.buckfast.org.uk](http://www.buckfast.org.uk) or call 07944 504283.

### The Tradesmans Arms



**THE TRADESMANS ARMS,  
SCORRITON  
TQ11 0JB**

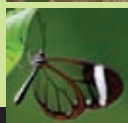
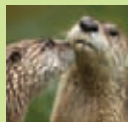
- Warm Welcome • Fine Real Ales
- Beer Garden • Accommodation Available
- Delicious Home Cooked Food

**Tel: 01364 631206**

[www.tradesmansarms-dartmoor.com](http://www.tradesmansarms-dartmoor.com)

**Dartmoor  
Otters &  
Buckfast  
Butterflies**

[www.ottersandbutterflies.co.uk](http://www.ottersandbutterflies.co.uk)



*Discount  
joint tickets  
available with  
South Devon  
railway!*

*A great family visit  
whatever the weather*

**Tel: 01364 642916**

# Arts & Culture

## Enjoy our creative hotspot



**Jellyfish Art Hub in the centre of town, next to the Town Hall, is the local creative exchange: a lively, bright gallery, café and bar that doubles as a photography and film studio.**

Enjoy the work of local artists, musicians and our young people here, or come along to the many workshops, drop-in classes and live music events.

Jellyfish has established itself as a space for inspiration and creativity for locals looking for a venue to run workshops or classes, perform, have a concert or exhibit work. Every month there is a new exhibition and opening event, and year-round the centre runs exciting film and photography courses for children, teens and adults. Watch out for premieres from the Young Film Makers club or the monthly Film Study Group – newcomers welcome for a screening and discussion, but do book your seat.

Jellyfish is open Tuesday to Saturday. Check the website for latest daytime and evening events or drop in for a warm welcome.



**01364 642662 • [jellyfishprod.com](http://jellyfishprod.com)**



## We're well connected

For more than 30 years Scoriton and Buckfastleigh have been twinned with Fontaine-Henry in Normandy, a village between Caen and the D-Day beaches. The annual long weekend in either Normandy or Devon is hosted by local families. The French are welcomed with typical Devon hospitality, generously reciprocated when we visit France.

Email [scoritonbucktwinning@gmail.com](mailto:scoritonbucktwinning@gmail.com) to find out more.

**01364 642008**





## WALKS AROUND TOWN

**Buckfastleigh is full of nature, with many rare and special species in and around town and along the rivers. Our wildlife maps invite you to choose a gentle or longer stroll to take in the natural treasures and local history.**

One of the best and easiest places to see a range of wildlife is the Orchard Millennium Green on Station Road, with the River Mardle flowing through. It is home to a range of water fowl, birds, insects and fish. Here you'll meet our famous resident population of large friendly Muscovy ducks, with their distinctive red face masks. They were first brought to the UK from South America by explorers in the 1600s. Look out for a mum and her young wandering the paths and roads making their way to water. Please slow down: they are our natural traffic calming measure! The ducks are cared for by volunteers who will happily point out other residents, including Mallards and the brightly coloured Mandarins – probably the largest wild population in the UK. Linger on the green and you'll see Dippers, Kingfishers and the elusive Goosanders. The river is also home to migratory salmon and sea trout, eels and otters – all a little harder to spot. Look up and you'll see huge buzzards circling on the thermals that rise from the hillsides and the occasional passing peregrine falcon. The walks take you through and around the town, where it's common to find slow worms and grass snakes as well as lovely big fat dung beetles that feed our precious Greater Horseshoe Bat population.

### *Kilbury Manor*

BED & BREAKFAST, BUCKFASTLEIGH, DEVON, UK

AA 4\* Gold, with an award winning breakfast

Four double bedrooms set in 4 acres of gardens, just one mile from the centre of Buckfastleigh.

Contact Julia or Martin  
on 01364 644079  
[www.kilburymanor.co.uk](http://www.kilburymanor.co.uk)



## LOVEJOY'S

**TAXI**  
**JUST CALL**  
**07765 395341**  
**Find me on Google**

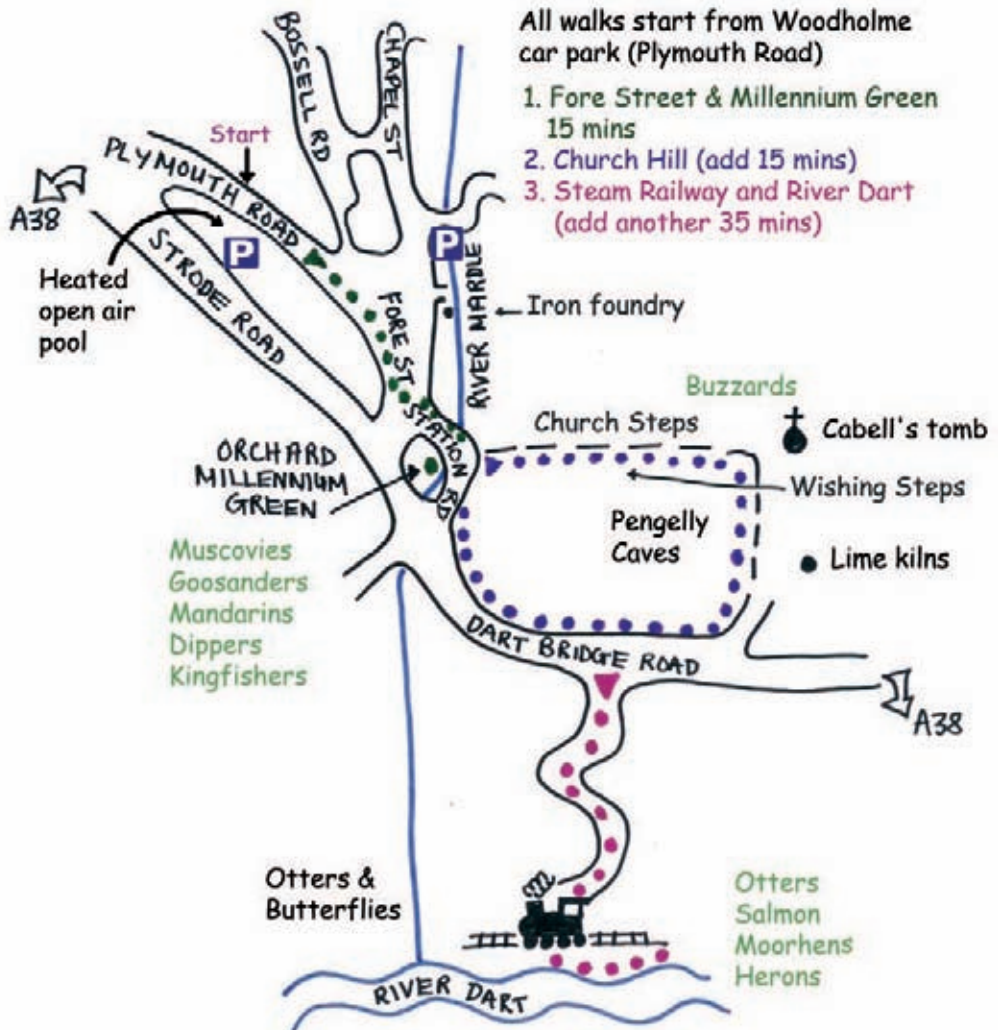
7 DAY SERVICE



# WALKS AROUND TOWN

Walks 1,2,3: Fore Street, Church Hill, Steam Railway & River (15 mins, 30 mins or 1hr). All walks start at the main Woodholme car park on Plymouth Road. Follow Walk 1 and extend to Walk 2 or Walk 3 if you wish to explore further.

*Meet the exotic and friendly ducks that live in town.*





## WALK 1

From the car park turn right towards Fore Street, with its shops, cafes and museum, also the town information point. Explore fine examples of the many 'opes' – archways to alleys and smallholdings behind the main street, including the old iron foundry with its overhead trolley system. Continue down Fore Street to Station Road.

On your right, where the bridge crosses the River Mardle, is the scenic Orchard Millennium Green, with picnic tables and tea and cake served on Sundays in summer. This is an excellent place to pause and spot the town's many duck species as well as Kingfishers and Dippers.



*Explore the ope arches around town and the 'bar where time was never called' at the Valiant Soldier in Fore Street. Climb above town for sweeping views of Dartmoor.*





**Walk 2 takes you up Church Steps and to the 19th century lime kilns.**

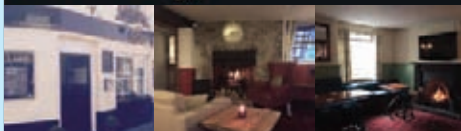
To add Walk 2, on Station Road, after the first row of cottages, you'll find Church Steps, a beautiful (but steep!) leafy walk up the historic Church Hill. Look out for the Wishing Steps on the way up, two steps with stones at right angles to the rest that invite you stop to make a wish. Continue up to the Holy Trinity Church ruins, where you'll find Cabell's Tomb in the churchyard, inspiration for The Hound of the Baskervilles.

Turn left out of the Church gate and head towards Pengelly Caves and the lime kilns, where information points explain the local geology and the 19th century lime production of these impressive stone kilns. Continue down the hill until you reach Dart Bridge Road. Turn right to head back to town via Station Road and Fore Street.

[www.theglobeinnbuckfastleigh.co.uk](http://www.theglobeinnbuckfastleigh.co.uk)

**The GLOBE Inn**

**01364 642223**



[emails@theglobeinnbuckfastleigh.co.uk](mailto:emails@theglobeinnbuckfastleigh.co.uk)

123 Plymouth Rd, Buckfastleigh, Devon TQ11 0DA

**Quality Ensuite B&B Rooms**

**Serving Fresh Food Daily**

*Open for breakfast, speciality teas,  
locally roasted coffee, cakes & other delights*

The Globe Inn are able to offer private function space for birthdays, anniversaries, or other special occasions.

The Inn offers a great range of cask ales

Serving Traditional Sunday Roasts from  
12pm Sundays. Booking advisable

Fantastic **Live Music** from Devon Bands  
Last Saturday of most Months

Check us out on FACEBOOK

## Rosemary Targett

BSc. (Hons) Pod MChs SRCh  
(H.P.C. Registered)

## Chiropody/Podiatry

### Biomechanics/Orthotics



**Home Visits  
Available**



Do you suffer with  
painful feet, ankles,  
knees, hips or  
low back?

Do you have tired  
achy legs or  
fallen arches?

If yes to any of  
these, then orthotic  
therapy could be  
the answer.

- Corns, callus,  
nails, footcare  
advice

- Biomech  
Assessments  
(General and  
sports, adults  
and children)

- Orthotic Therapy

- Foot Mobilisations

**For clinic appointments or home  
visits please phone 07724143481**

### WALK 3

Instead of returning to Fore Street at the end of Walk 2, cross Dart Bridge Road and head for the South Devon Railway. Here you'll find the historic steam railway, picnic spots and the Otters and Butterflies. Follow the well signposted, beautiful Riverside Walk that loops back into the railway's fascinating store and workshop area – full of old carriages, engines, parts and an observation gallery in the workshop.



### WALK 4

#### **Circular Walk for rare and beautiful wildlife and historic buildings (45 mins - 1 hr)**

Start at Woodholme car park on Plymouth Road. Cross the road to view the Town Mill Leat, the town's original source of water, running in front of the Victorian houses, with small stone bridges that the residents still use. Turn right to reach Fore Street and then immediately left onto Chapel Street. On the left, after the kebab shop, note the 17th century weavers' cottages with their wooden tenter lofts, which housed frames used for drying cloth woven from locally produced wool. The 'tenterhooks', which secured the fabric to prevent shrinkage, is the origin of the expression 'on tenterhooks', meaning to be in a state of uncomfortable suspense.



Continue along onto Market Street and note the Launder aquaduct just after the River Mardle bridge, which used to bring clean water to the old mill site in town. The more modern building on the right is the last working sheepskin tannery in the UK and supplies carpets to Rolls Royce.

*The circular walk explores the historic town and wonderful riverside meadows where you might find big fat Dung Beetles and the less well known Violet Oil Beetle (left).*





When you reach the top of Market Street, take a small detour to the right onto Mardle Way and cross the road to view the UK's largest patch of the rare Deptford Pink, which flowers from June to August. Return to walk up the hill and take the footpath (signposted) on the right up towards Church Hill. Turn left onto Church Cross Road and stop at the crossroads to take in the view of Dartmoor ahead.

Go straight across and onto Holne Road and after a few hundreds yards turn left onto Cricket Lane (by the sports ground). At the end of this road, cross to the public footpath and head down the steep, stony path towards the River Mardle. Between here and Merrifield Road are woodland and meadows, where you'll find abundant wildlife including woodpeckers, dragonflies, the rare violet oil beetle, butterflies and many wild flowers. As you leave the meadows, turn left onto Merrifield Road and walk past old farm buildings and back into town.

# JOLLY ROGERS



*Breakfast Bar / Fish Bar and Restaurant*

**Plymouth Road, Buckfastleigh, Devon TQ11 0DA**

**Phone 01364 642390**

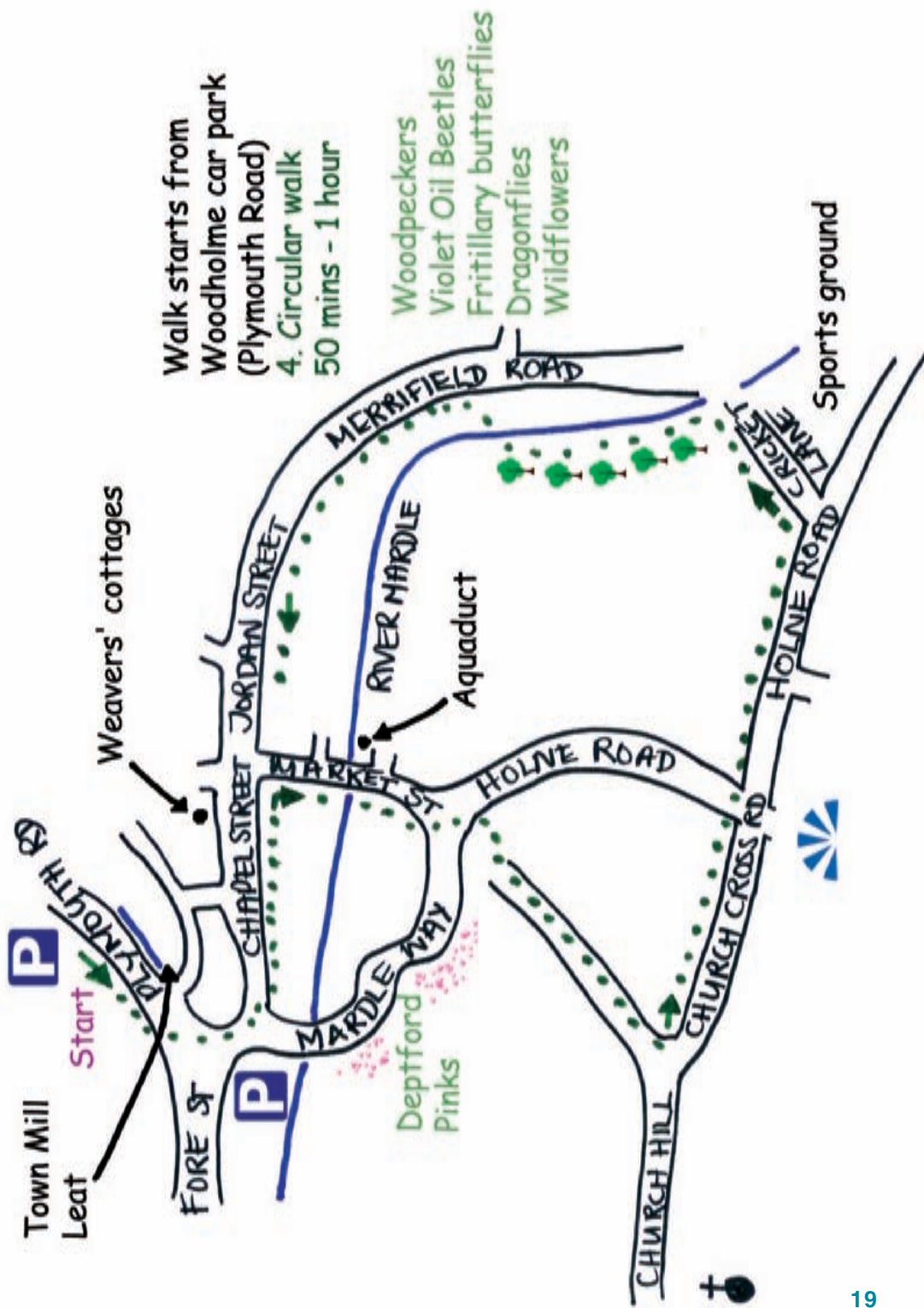
*Traditional fish and chips at their best*



**Now doing breakfasts  
9am-12pm Monday to Saturday  
Eat In Or Take Away**

*We have a wide & varied menu, also a vegetarian menu*

**Opening times for the chip shop  
12pm-2pm & 5pm-9pm • Monday to Saturday**



# The heart of town

## Fore Street



**CHAPEL STREET**  
SUPERMARKET  
KEBABS  
SECOND-HAND FURNITURE  
CATHOLIC CHAPEL  
METHODIST CHAPEL





### PLYMOUTH ROAD

HEATED OPEN AIR POOL & CAFÉ

MAIN CAR PARK

ARTS HUB

FARMERS MARKET (THURS am)

MEDICAL CENTRE

TOWN HALL

LIBRARY

CofE CHURCH



[illegible]





# Don't miss this!

## High jinks & crazy capers

Buckfastleigh hosts some unusual activities that capture the sense of humour and sprit of adventure of local residents



### January: Ice Gala

The madness kicks off with the Ice Gala in late January, where heaters in the open air pool are turned off and swimmers, many in fancy dress, race in the chilly waters.

### February: All Hands to the Pump

Moving on to February, you can warm up on hot food while watching the Wild West style 'pump trolley' racing at South Devon Railway's Buckfastleigh Station (above).

### June: Duck Race

Don't miss the annual Duck Race, where you can buy your own plastic duck and enter as part of the Millennium Green fun day.

## *The Rock*

### RETIREMENT HOME

*Family run home, specialising in individual personal care for the elderly with dementia*

Warm and friendly atmosphere

Large garden

Registered for 14 residents

**01364 642706**

1 STATION ROAD, BUCKFASTLEIGH

## Lower Cobberton

[www.south-devon-bed-breakfast.co.uk](http://www.south-devon-bed-breakfast.co.uk)

- Bed & Breakfast accommodation includes farmhouse cooked breakfasts
- All home cooked food using fresh local produce
- Mongolian Yurt
- B&B Family Unit
- Offers local sightseeing tours

**Tel: 01803 866983**

Email: [info@south-devon-bed-breakfast.co.uk](mailto:info@south-devon-bed-breakfast.co.uk)  
Lower Cobberton, Dartington, Totnes, Devon TQ9 6DS



## July: Lamb Pie Day

Everyone comes out to enjoy the town's biggest festival, the famous Lamb Pie Day, when Fore Street closes to play host to stalls, games and live music, with celebrations continuing into the small hours.

## October: River Dart Struggle

The racing theme returns as contestants take part in a kind of 'Wacky Races' on water. Entrants build their own rafts, dress in exotic costumes and navigate 14 kilometres downstream from Buckfastleigh to the finish in Totnes.

## December: Christmas Fair & Pantomime

December sees Fore Street close again for a Christmas market including food stalls, mulled wine and live music in the street, while the Town Hall hosts the annual Pantomime.

All events are in aid of local charities. Check the town council website for more details, dates and times: [www.buckfastleigh.gov.uk](http://www.buckfastleigh.gov.uk)



**F. CHRISTOPHERS & SON LTD**

**Independent Family Funeral Directors**

Bridge House, 9 Kingsbridge Lane, Ashburton,  
TQ13 7DX

**01364 654065**

[www.fchristophersandson.co.uk](http://www.fchristophersandson.co.uk)  
[info@fchristophersandson.co.uk](mailto:info@fchristophersandson.co.uk)

### Churchill Farm Caravan & Campsite

Buckfastleigh,  
Devon, TQ11 0EZ  
Tel: 01364 642844  
Mob: 07977 113175  
Email: [a.pedrick@btinternet.com](mailto:a.pedrick@btinternet.com)



Family farm welcoming caravan/  
tents/motorhomes. Situated overlooking  
panoramic views of Dartmoor and Buckfast Abbey.  
Footpaths lead to Abbey, Butterfly/Otter sanctuary,  
Steam Railway & Buckfastleigh. Ideal base to  
explore South Devon. From A38 follow signs to  
Buckfast Abbey, proceed uphill, at cross-roads  
turn left towards Holy Trinity Church.

# Myths & Legends

*Cabell's tomb in the graveyard of the ruined church.*



## Poisoned blades, warrior women and the evil squire

**Buckfastleigh** combines ancient settlements that carry many local legends.

### THE HOUND OF THE BASKERVILLES

Sherlock Holmes author Sir Arthur Conan Doyle used many locations as inspiration his famous detective stories, none so well known as The Hound of the Baskervilles. This is based on the legendary tomb at Holy Trinity Church on Church Hill, up the steps from Station Road. The grounds of the ruined 13th century church include a metal-barred 'sepulchre' which holds the remains of Squire Cabell of Brook Manor, a notoriously violent and wicked man reputed to have murdered his wife and sold his soul to the devil. He hunted on the moor with hounds and was despised and feared by locals.

Cabell died in 1677 and on the night of his interment a phantom pack of fire-breathing black hounds was said to have come from Dartmoor to howl around his tomb, waiting to claim his soul. From that night his ghost could be found raging around his grave. The locals decided to strengthen the grave to 'keep him in', yet stories continued of a red glow coming through the metal bars and demonic creatures gathered there. Squire Cabell is said to gnaw the fingers of anyone who dares to put their figure into the keyhole of the tomb after circling it seven times.

Directly beneath the tomb is the system of ancient limestone caves that include a mineral formation known as the 'Little Man' – said to look like the squire in his 17th century attire.



*Spooky haunt of the evil squire who inspired Conan Doyle, and the 'Little Man' formation found in the cave deep below.*



## THE WISHING STEPS

As you ascend the 196 steps from Station Road in the centre of town to the ruins of Holy Trinity you come to the 'Wishing Steps' or 'Kissing Steps', where two steps have had their stones laid at right angles to all the others. Local lore records that Satan was foiled by the steps in his attempts to prevent the building of the church.



### THE ABBEY INN. RIVERSIDE INN AND RESTAURANT

Riverside situation close to Buckfast Abbey, Steam Railway and Otter and Butterfly Sanctuary.

Selection of real ales.

Food served Lunchtime 12-3pm  
Dinner 6-9pm, Sunday carvery 12-3pm

8 en suite letting rooms with river views.

30 Buckfast Road Buckfastleigh  
Devon TQ11 0EA

Telephone: 01364 642343

Website:  
[www.theabbeyinn-buckfast.co.uk](http://www.theabbeyinn-buckfast.co.uk)

## Buckfastleigh Post Office

*For all your Post Office needs including  
Car Tax, Banking, Foreign currency & Lottery  
Shop stocks wide range of greetings cards,  
stationery and local gifts.*

**Now selling local bread, cakes, ham,  
cheese, eggs and preserves.**

Always guaranteed a friendly welcome  
Open 8.30am – 5.30pm Monday to Friday  
and 8.30am – 2pm Saturday

**01364 643369**



**MISSSED ADVERTISING IN THIS  
GUIDE & WANT TO ADVERTISE  
IN THE NEXT ONE?**

Contact us on **01233 627274**

or visit our website  
**[sbpublishing.net](http://sbpublishing.net)**



Email us at  
**[sbpublishing@outlook.com](mailto:sbpublishing@outlook.com)**



## LADY DYONISIA AND THE POISONED DAGGER

The 13th century manor of Skerraton in the parish of Dean Prior was owned half by Lady Dyonisia and half by Nicholas de Kingdom, betrothed to Lady Dyonisia in the hope of controlling all the land. The lady changed her mind and married Sir John de Boyvile. Nicholas, in his fury, killed Sir John with a poisoned dagger that also scratched himself. About to die, he staggered home and murdered Lady Dyonisia. Nicholas was buried at Buckfast Abbey where, according to local legend, the ghostly form of Lady Dyonisia hovered over his grave until the story of double murder was finally revealed.

# GILPIN GROUP

**With over 30 years experience, we are capable of undertaking a variety of works with a high level of competency.**

**Based in the South West, we have offices in both Buckfastleigh and Heathfield providing local and nationwide services.**

## DEMOLITION

**Marine, bridge, commercial, industrial & residential demolition**

**www.gilpindemolition.com**  
**Tel: 01364 644 611**  
**office@gilpindemolition.com**

## ASBESTOS

**Certified asbestos removal and disposal from residential and commercial locations**

**www.gilpinenvironmental.com**  
**Tel: 01364 644 611**  
**office@gilpinenvironmental.com**

## SCRAP METALS

**Recycling of Scrap metals and End of Life Vehicles plus local skip hire**

**www.gilpinscrapmetals.com**  
**Tel: 01626 830 762**  
**office@gilpinscrapmetals.com**

## VIKING RESISTANCE AT HEMBURY CASTLE

Within Hembury Woods, to the north of town, are remains of an ancient Dartmoor hillfort, on a spur of land between the River Dart and Holy Brook, known as the 'Danish Camp'. It is said that Vikings sailed up the Dart, pillaging and burning, and captured the fort and the local womenfolk. But while their captors slept, the women arose, slit their throats and opened the fort so the menfolk could return.

## BALING AT HOUND'S POOL

A greedy and selfish local weaver named Knowles was given a generous send-off upon his death. The following day, to his horror, the weaver's son heard the familiar clacking of his father's loom and found him working away. The local parson, called to exorcise this troubled spirit, threw a handful of churchyard earth at him, transformed him into a large black hound and led him to the Dean Burn, which runs through Dean Prior and onto Buckfastleigh. They reached a pool and the parson gave the hound a perforated nut shell and told him to empty the pool with it. When the pool is empty, his spirit will be free. Legend has it that when a clock strikes midday or midnight the ghostly hound can still be seen, baling for his soul's rest.





# Adventure

## Ancient caves, canoe adventures & Dartmoor by bike

**Buckfastleigh is a relaxing and exciting place to base yourself to explore the stunning natural landscape of Dartmoor.**

### WE'RE PART OF THE DARTMOOR WAY CYCLE ROUTE

Buckfastleigh is the mid-way point of the dramatic 24-mile stretch (Ivybridge to Bovey Tracey) of the circular Dartmoor Way. This 95 mile-long circular route winds through the High Moor, exploring the varying dramatic landscape of Dartmoor National Park, linking its hamlets, villages and towns and picking up quiet Devon lanes, minor roads and cycle tracks.  
[dartmoorway.co.uk](http://dartmoorway.co.uk)

### RIVER DART: THE ULTIMATE CANOE ADVENTURE

Arguably the best white water in England, the Dart sees at least 20,000 descents a year, with its challenging top-end run from Dartmeet, the classic moderate 'Loop' section from Newbridge to River Dart Country Park (a few miles north of the town) and gentler stretches through Buckfastleigh and on to Totnes.



*Pengelly Caves,  
with their  
100,000-year-old  
remains, are open  
for guided tours  
in August.*



The Dart draws canoeists from around the country and in 2016 winter canoeists and summer visitors are welcomed at the Salmon's Leap café, just off the A38 at the entrance to town, with free parking for those who want to stop for breakfast, a hot pasty or a slice of cake.

### **PENGELLY CAVES REVEAL DEVON'S ANCIENT ELEPHANTS**

Our most ancient treasure hoard is to be found on Buckfastleigh Hill, in the Higher Kiln Quarry series of caves that have been protected as a Special Area of Conservation. The caves contain 100,000-year-old fossilised remains of rhinos, hippos, bison, hyaenas and straight tusked elephants that used to roam here. Protected under a trust, summer visitors can access the caves, the Pengelly museum and the nearby limestone kilns via the twice-weekly guided walks in August (each lasts around 90 minutes; small fee, no need to book) or by arrangement for special visits. Details are on the website or via the Valiant Soldier information point in Fore Street.

**Organised groups: 01752 775195 [pengellytrust.org](http://pengellytrust.org)**

# Local Food

## Cooking up a feast

**Buckfastleigh is a haven of food production, with nationally known, quality organic brands and many smaller local specialists.**

Luscombe Drinks, Riverford, Clive's Pies, Westcountry Spice (which exports organic Hoisin Sauce to China!) and Dragonfly Foods are all based locally and supply outlets in Fore Street. Also in town, Waldrons Patisserie is a leading supplier of cakes and desserts, and arguably Britain's finest coffee is roasted in town, at Voyager Coffee.

There are also many small independent growers, bakers, brewers and farmers and their produce is available in shops and at the Thursday morning farmers' market, just behind the Globe Inn on Plymouth Road, near the main car park.



*The Globe is one of many welcoming eateries in town serving delicious and locally sourced food.*

### The Seed

**Buckfastleigh's Community  
Wholefood Shop and Café**

40 Fore St, Buckfastleigh, TQ11 0AA  
Open Monday - Saturday, 8.30am - 6pm

- Organic wholefoods and vegetables
- Moorbakes' artisan bread
- Free-from foods
- Eco-friendly cleaning products
- Health and body care products
- Organic dairy products from Devon

*All at the best possible prices*

Visit our café for tasty treats and organic coffee produced in Buckfastleigh

Small but perfectly formed, *The Seed* is a not-for-profit Community Interest Company

Join us as a volunteer and support this inspiring project

**01364 644 699**

An advertisement for Clarkes Antiques. The background is a photograph of a fireplace mantel with a classical urn. The text is overlaid on the image.

*Clarkes*  
ANTIQUES

- ≈ Fireplaces
- ≈ Furniture
- ≈ Mirrors & Lighting
- ≈ Collectables & More

**01364 643060**  
Items Bought/Sold  
r/o 32 Fore St., Buckfastleigh



# Love it? Then learn it...

Apart from enjoying our local food, why not come and learn how to make it?

**Coffee:** Train to be a Barista at Voyager Coffee for just £75. **01364 644440**

**Beekeeping and honey production:** Advanced and beginners courses at Buckfast Abbey. **07944 504283**

**Baking & patisserie:** Courses in traditional and sourdough breadmaking, patisserie & barbecuing from local supplier Moorbakes from £75. **01364 698 010**



*Take a stroll down Fore Street for a great choice of cafés and restaurants and a delicious fresh baked (and gluten-free) cream tea.*

## Furzeleigh Mill

Situated in own grounds with a sunny south facing aspect, this character 16th Century former Corn Mill offers the warmth of a homely atmosphere with hotel quality and service, privately owned and personally run. Close to the ancient stannery towns of Buckfastleigh and Ashburton and the medieval town of Totnes, midway between Plymouth and Exeter, Furzeleigh is in a superb central location perfectly placed for Holidays, Business, Moor or Coast.

- ★ Hotel Quality and service at sensible prices
- ★ Perfectly placed for moor and coast
- ★ Easy walk Buckfast Abbey, Steam Railway, Otter Sanctuary and Butterfly Farm
- ★ Ample parking in own car park
- ★ Flower garden for guests
- ★ Situated in own grounds
- ★ Special offers and bargain breaks
- ★ All ensuite bedrooms overlook the lovely River Dart Valley
- ★ Cosy bar and residents lounge



**FURZELEIGH MILL, DARTBRIDGE, OLD ASHBURTON ROAD, BUCKFASTLEIGH, DEVON**

**Tel: 01364 643476 • Email: [enquiries@furzeleigh.co.uk](mailto:enquiries@furzeleigh.co.uk)**

**Visit our web page at [www.furzeleigh.co.uk](http://www.furzeleigh.co.uk)**

# Did you Know?



*Steam expert David (right) is now celebrating 62 years in the cab at South Devon Railway.*

## Buckfastleigh bogglers

**The year 1350** is one of the first recorded entries for Buckfastleigh. The settlement was established by then and both Higher Town and Lower Town are indisputably medieval in origin, retaining their original layout as some of the finest examples in England.

**In 1883** a builder from Yealmpton called Henry Fowler bought a long lease on the London Inn, a coaching stop on Fore Street dating from the 1800s. Two of his grandsons, Henry (jnr) and brother Frank, compiled the first edition of the Concise Oxford Dictionary. Henry (jnr) also compiled Fowler's Modern English Usage.

**Geologically** Buckfastleigh is fascinating. The ruins of Holy Trinity Church stand on a great Devonian period limestone hill, the oldest type of limestone found in the British Isles, which occurs almost exclusively in Devon and Cornwall.

**In World War Two**, two large bombs and six smaller ones were dropped on Buckfastleigh. One hit the town's mill, one damaged Holy Trinity Church and others went down through Buckfast, hit the road, bounced across the river and landed in a field. They were probably being off-loaded by the German pilot on his way home.

**Buckfastleigh** is the longest place name in England with no repeated letters.

**A Buckfastleigh mine** (location secret) supplied the pitchblende that Marie Curie used to discover radioactivity.

**The Devon and Longwool sheep**, with their beautiful cream-coloured ringlets, are found exclusively in the area and are now classified as a 'vulnerable' species.

**Buckfast Abbey gardens** include more than 150 species of lavender and a poison garden. The Abbey will be 1,000 years old in 2018.

**The first Victoria Cross awards** included Dean Prior's best-known military hero, John Pethyjohns, for bravery in the Crimean War.

**South Devon Railway (SDR)** is proud to count one of the longest serving steam men in the country among its drivers. David Ernest Knowling worked for British Railways (Plymouth) in 1954 aged 15. In 1967 he started with the Dart Valley Railway (now SDR) – 62 years in the cab!

**The railway opened in 1872** and was built to Brunel's famous Broad Gauge of 7'0¼" (modern trains use 4'8½"). The only surviving broad gauge locomotive is in the museum in Buckfastleigh and is called Tiny (you can probably guess why!).



## LEISURE & TOURISM

### Information point

**The Valiant Soldier**, Fore St, Buckfastleigh TQ11 0BS 01364 644522  
[enquiries@valiantsoldier.org.uk](mailto:enquiries@valiantsoldier.org.uk)

### Town Hall

Bossell Road, TQ11 0DD (Mon-Fri 9.00am - 1.00pm) 01364 642576  
[buckfastleigh.gov.uk](http://buckfastleigh.gov.uk)

### Buckfast Abbey

[www.buckfast.org.uk](http://www.buckfast.org.uk) 01364 645500

### Buckfastleigh Heated Open Air Swimming Pool

[buckfastleighpool.co.uk](http://buckfastleighpool.co.uk) 01364 642222

### Dartmoor information

[dartmoor.gov.uk](http://dartmoor.gov.uk)

### Dartrock Climbing Centre

[www.dartrock.co.uk](http://www.dartrock.co.uk) 01364 644499

### Jellyfish Arts Hub

<http://jellyfishprod.com> 01364 64 2662

### Museum & Archive

The Valiant Soldier, Fore St 01364 644522  
[www.valiantsoldier.org.uk](http://www.valiantsoldier.org.uk)

### Otters + Butterflies

[www.ottersandbutterflies.co.uk](http://www.ottersandbutterflies.co.uk) 01364 642916

### Pennywell Farm

[www.pennywellfarm.co.uk](http://www.pennywellfarm.co.uk) 01364 642023

### South Devon Railway

<http://southdevonrailway.co.uk> 01364 644370





## MEDICAL

<b>NHS</b> (non-life threatening)	111
<b>Minor injuries</b> Ashburton and Buckfastleigh Hospital	01364 652203
<b>GP</b> Buckfastleigh Medical Centre	01364 642534
<b>Hospital</b> Torbay Hospital	0300 456 8000 01803 614567
<b>Dentist</b> Moor Dental Care	01364 652850

## EMERGENCY

<b>Emergency services</b> (ambulance, fire, police)	999
<b>Police</b> (non-urgent)	101
<b>Devon Cave Rescue</b>	07748 762580

## LOCAL SERVICES

<b>Post offices</b> Buckfastleigh Post Office Buckfast Post Office	01364 643369 01364 643034
<b>Chemist</b> Boots, 47-48 Fore Street Buckfastleigh	01364 642325
<b>Farmers' Market</b> Globe Car Park, Buckfastleigh, every Thursday 9am-1pm	
<b>Library</b> The Town Hall, Bossell Road, Buckfastleigh	01364 642638
<b>Vet (24-hour)</b> Dart Vale Veterinary Group	01364 644441

## PLACES TO STAY IN AND AROUND BUCKFASTLEIGH

### Bed and Breakfast

<b>Acorns B&amp;B</b> (Buckfastleigh)	01364 643943/07954 382021
<b>Abbey Inn</b> (Buckfast) www.theabbeyinn-buckfast.co.uk abbeyinn@outlook.com	01364 642343
<b>Church House Inn</b> (Holne) www.dartmoorchurchhouseinn.co.uk dartmoorchurchhouseinn@btconnect.com	01364 631208
<b>Dartbridge Inn</b> (Buckfastleigh) Dartbridge.Buckfastleigh@greeneking.co.uk	01364 642214 Reservations: 0845 6086040
<b>Dartmoor Lodge Hotel</b> (Ashburton) www.dartmoorlodge.co.uk reservations@dartmoorlodge.co.uk	01364 652232
<b>Furzeleigh Mill</b> (Buckfastleigh) www.furzeleigh.co.uk enquiries@furzeleigh.co.uk	01364 643476
<b>Gages Mill Country Guest House</b> (Ashburton) www.gagesmill.co.uk	01364 652391
<b>The Globe Inn</b> (Buckfastleigh) www.theglobebuckfastleigh.co.uk dja.simpson@icloud.com	01364 642233
<b>Kilbury Manor Farm</b> (Buckfastleigh) www.kilburymanor.co.uk info@kilburymanor.co.uk	01364 644079
<b>Mitchelcroft</b> (Scoriton) www.mitchelcroft.co.uk mitchelcroft@hotmail.co.uk	01364 631336 / 07841 342070
<b>The Tradesmen's Arms</b> (Scoriton) www.thetradesmansarms.co.uk	01364 631206

---

### Camping

<b>Beara Farm</b> (Buckfastleigh)	01364 642234
<b>Churchill Farm</b> (Buckfastleigh) www.churchillfarmcampsite.com • apedrick@btinternet.com	01364 642844

---

### Self Catering

<b>Bowden Lodge</b> Bowden Farm (Buckfastleigh)	01364 643955 / 07790 611289
<b>Brook Cottage</b> (Buckfastleigh)	020 885 65602
<b>The Bungalow</b> (Dean Prior)	01364 643800
<b>Fern &amp; Primrose Cottages</b> (Hayford)	01364 643848
<b>Pump Cottage &amp; Flat</b> (Buckfastleigh)	01364 643689

# Church Services

## CHURCH OF ENGLAND

### St. Luke's Church, Plymouth Road, Buckfastleigh

[stlukeschurch.buckfastleigh.org.uk](http://stlukeschurch.buckfastleigh.org.uk)

Sunday 10.45am	Sunday service (Holy Communion 2nd and 4th Sundays)
2nd Sunday of month 7pm	Contemporary music, prayer and reflection
3rd Sunday of month 4pm	Family 'Messy Church' (craft, short service, food)
4th Sunday of month 9am	Early bird service (informal)
Wednesday 10-11am	Cradle day (families with pre-school children)
Thursdays 10am to Noon	Coffee morning

### Church of St. George the Martyr, Dean Prior

Sunday (except 2nd Sunday)	
9.15am	Holy Communion or Morning Prayer (Book of Common Prayer)
2nd Sunday of month 5pm	Songs of Praise in 'The Studio'

## METHODIST

### Methodist Chapel, Chapel Street, Buckfastleigh

Sunday 10.30am	Traditional worship
Tuesday 9.30-11.30am	Coffee morning
1st Tuesday of month 10.30am	Weekday Worship
2nd Tuesday of month 2.30pm	United Service, Redmount Nursing Home
Wednesday 10.30am	United prayer meeting at St. Luke's

### Buckfast Chapel (opposite Buckfast Abbey)

Weekdays 10am until dusk	Open
Sunday 3pm	Traditional worship

## ROMAN CATHOLIC

### Buckfast Abbey, Buckfast Road, Buckfast

[www.buckfast.org.uk](http://www.buckfast.org.uk)

Sunday 10.30am	Mass with monastic community
Sunday 9am	Holy Mass
Monday to Saturday 8.00am	Mass with monastic community
Monday to Saturday 12.05pm	Holy Mass
Holydays 8am and 12.05pm	Holy Mass

### St. Benedicts, Chapel Street

Mondays & Thursdays 9.15am	Mass (phone to confirm)
Saturday 5pm	1st Mass of Sunday

## THE CHRISTIAN COMMUNITY

### Movement for Religious Renewal, 23 Chapel Street

Sundays & Wednesdays 10am



# DARTROCK

CLIMBING CENTRE



**Come Climb With Us**

**Indoor climbing in the  
heart of Devon**

**Some of Devon's Best  
indoor bouldering  
Lead climbing  
Top roping  
Auto belays**

**Training facilities  
Coaching  
Highly qualified and  
knowledgeable staff**

**Kids clubs  
Adult club nights  
Outdoor instruction/guiding  
Caving, deep water soloing,  
mountaineering**

**Ideal for the expert climber  
or first time novice**



**NEW EXCITING BOULDERING CAVE UNIQUE IN THE  
SOUTH WEST!! Artificial cave system**

DART ROCK CLIMBING CENTRE DART MILLS, OLD TOTNES ROAD  
BUCKFASTLEIGH TQ11 0NF

EMAIL US: [INFO@DARTROCK.CO.UK](mailto:INFO@DARTROCK.CO.UK)  
PHONE: 01364 644499



## **COMMERCIAL SPACE & SELF STORE UNITS TO RENT**

**COMMERCIAL SPACE  
AVAILABLE LARGE OR  
SMALL UNITS.**

**SUITABLE FOR  
OFFICE, STORAGE,  
ASSEMBLY,  
FABRICATION ETC.,  
PARTICULARLY  
SUITABLE FOR FOOD  
PRODUCTION.**

**FLEXIBLE LEASES,  
LONG OR SHORT  
TERM LETS.**

**INDIVIDUAL SELF  
STORAGE UNITS FOR  
PRIVATE OR  
BUSINESS USE.**

**CONVENIENT,  
CONFIDENTIAL, COST  
EFFECTIVE.**

**NO LONG TERM  
COMMITMENT.  
YOU STORE IT, YOU  
LOCK IT, YOU KEEP  
THE KEY.**

**MARDLE ASSOCIATES  
& SELF STORE  
HAMLYN HOUSE, MARDLE WAY,  
BUCKFASTLEIGH, DEVON. TQ11 0NS  
TELEPHONE 01364 644464  
EMAIL [INFO@HAMLYNHOUSE.CO.UK](mailto:INFO@HAMLYNHOUSE.CO.UK)**